

# FINGERING CHART

## E $\flat$ ALTO CLARINET

### Instrument Care Reminders

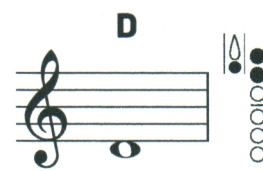
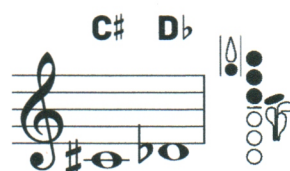
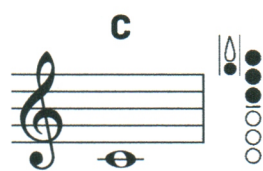
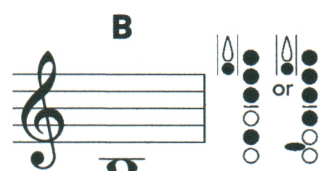
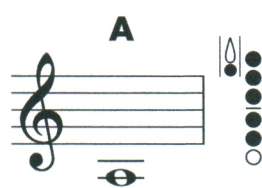
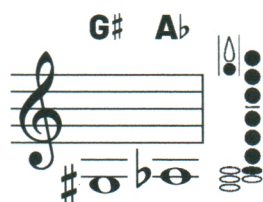
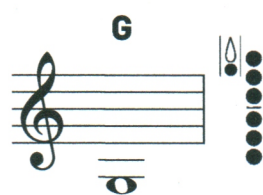
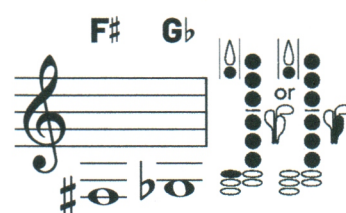
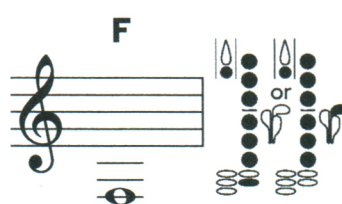
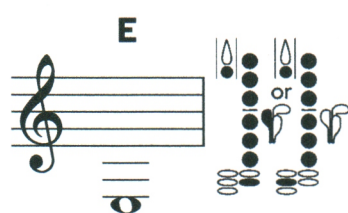
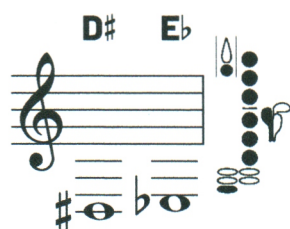
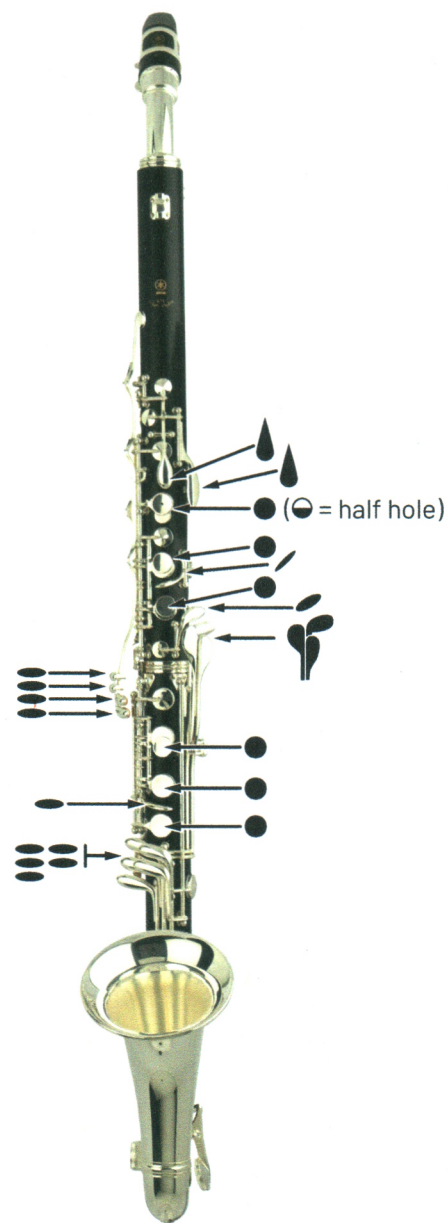
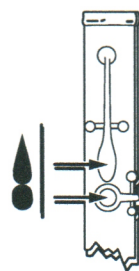
Before putting your instrument back in its case after playing, do the following:

- Remove the reed, wipe off excess moisture and return it to the reed case.
- Remove the mouthpiece and wipe the inside with a clean cloth. Once a week, wash the mouthpiece with warm tap water. Dry thoroughly.
- Remove the neck and bell, and shake out excess moisture. Hold the upper section with your left hand and the lower section with your right hand. Gently twist the sections apart. Shake out the excess moisture.
- Drop a weighted chamois or cotton swab into the body of the instrument and pull it out the bottom.
- If the body of your alto clarinet has two sections, gently twist them apart. Return the body section(s) to the case.
- As you put each piece back in the case, check to be sure they are dry.
- Your case is designed to hold only specific objects. If you try to force anything else into the case, it may damage your instrument.

○ = Open

● = Pressed down

*Alternate fingerings are used in certain situations to allow for smoother technique. These are shown to the right of the more common fingerings.*



# FINGERING CHART

## E $\flat$ ALTO CLARINET

