

FINGERING CHART

E \flat ALTO SAXOPHONE

Instrument Care Reminders

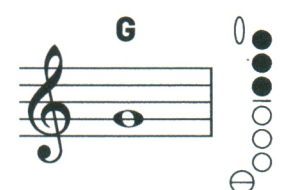
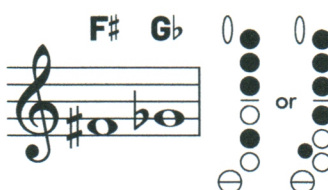
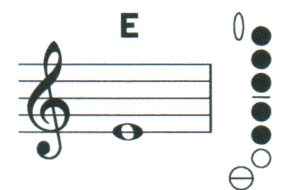
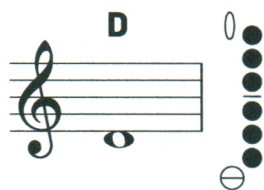
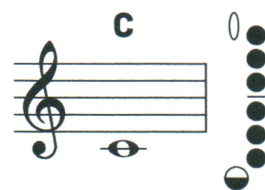
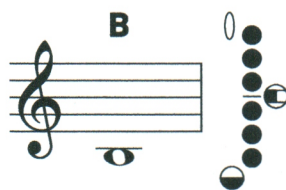
Before putting your instrument back in its case after playing, do the following:

- Remove the reed, wipe off excess moisture and return it to the reed case.
- Remove the mouthpiece and wipe the inside with a clean cloth. Once a week, wash the mouthpiece with warm tap water. Dry thoroughly.
- Loosen the neck screw and remove the neck. Shake out excess moisture and dry the neck with a neck cleaner.
- Drop the weight of a chamois or cotton swab into the bell. Pull the swab through the body several times. Return the instrument to its case.
- Your case is designed to hold only specific objects. If you try to force anything else into the case, it may damage your instrument.

○ = Open

● = Pressed down

The most common fingering appears first when two fingerings are shown.



FINGERING CHART

E \flat ALTO SAXOPHONE

