

FINGERING CHART

F HORN

Instrument Care Reminders

Before putting your instrument back in its case after playing, do the following:

- Use the water key to empty water from the instrument. Blow air through it. If your horn does not have a water key, invert the instrument. You may also remove the main tuning slide, invert the instrument and remove excess water.
- Wipe the instrument off with a clean soft cloth. Return the instrument to its case.
- Remove the mouthpiece. Once a week, wash the mouthpiece with warm tap water. Dry thoroughly.

Be sure to grease the slides regularly. Your director will recommend special slide grease and valve oil, and will help you apply them when necessary.

CAUTION: If a slide, a valve or your mouthpiece becomes stuck, ask for help from your band director or music dealer. Special tools should be used to prevent damage to your instrument.



Using the Correct Fingering

Single Horn Players

- F Horn players use the upper fingerings - marked "F Horn"
- B \flat Horn players use the lower fingerings - marked "B \flat Horn"

*The trigger key (**T**) is only used on double horns.

Double Horn Players

- The trigger key (**T**) allows double horn players to switch between F and B \flat Horn
- Use the "F Horn" fingering when the trigger key is not pressed.
*For notes without a "**T**" fingering, the F Horn fingering is the recommended double horn fingering for that note.
- Use the "B \flat Horn" fingering when the trigger key is pressed.
*For notes with a "**T**" fingering, the B \flat Horn fingering is the recommended double horn fingering for that note.

○ = Open

● = Pressed down

T = Trigger (Double Horn Only)



F Horn
B \flat Horn

● ○ ○
T ○ ○ ○



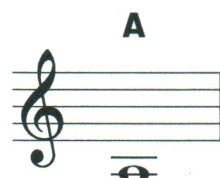
○ ○ ○
● ● ●



○ ○ ○
● ○ ●



○ ● ●
○ ● ●



F Horn
B \flat Horn

● ● ○
● ● ○



● ○ ○
● ○ ○



○ ● ○
○ ● ○



○ ○ ○
○ ○ ○

FINGERING CHART

F HORN

C# D \flat



F Horn
B \flat Horn



D



D# E \flat



E



F



F Horn
B \flat Horn



F# G \flat



G



G# A \flat



A



F Horn
B \flat Horn



A# B \flat



B



C



C# D \flat



F Horn
B \flat Horn



D



D# E \flat



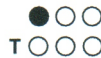
E



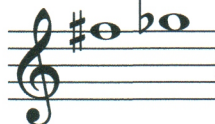
F



F Horn
B \flat Horn



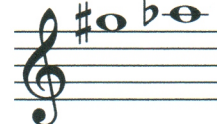
F# G \flat



G



G# A \flat



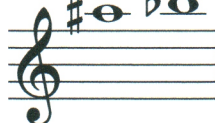
A



F Horn
B \flat Horn



A# B \flat



B



C

